

# FRICKS Valued Customers



# FRICKS Automation Partners



# Automation *begins with the floor.*

Industrial Concrete Floors



# FRICKS is the **ONLY** Nationwide Single-Source Design/Build Industrial Floor Company for **ALL** the Latest in Automated Material Handling Solutions



**Automated Guided Vehicles**  
Smooth transitions over fewer joints means less equipment maintenance

**Mobile and Industrial Robotics**  
Finite flooring tolerances allow for specific robotic operations

**Picking Technologies**  
Precision level floors for accurate movement

**Industrial Delivery**  
High performance, long lasting floors increase work capacity and safety

## Expertise Matters

The ASCC Award for Floor Excellence is The Terry Fricks Award" and the Leader for "Golden Trowel Awards" ever received.



**Capability**  
Significantly Increased Precision through FRICKS Unmatched Finishing Techniques

**Productivity**  
Decrease in Floor Maintenance, Product Loss and Overall Downtime

**Consistency**  
Mobilizing and Utilizing FRICKS Own Veteran Force of Professional Journeyman with No Sub-Contracting

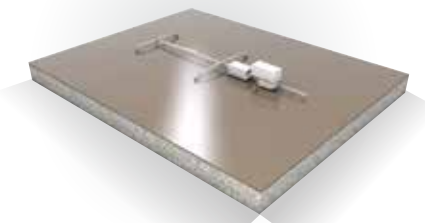
**Materials**  
Only State-of-the-Art Tested and proven Materials in FRICKS Floors

**Reliability**  
Minimum 3 Year FRICKS Warranty

**Performance**  
Virtually Eliminates Curling, and Delivers Flatness/Levelness

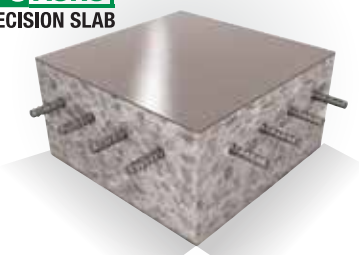
FRICKS are the True Pioneers and the Recognized Experts in Industrial Concrete Floor Design Solutions and Construction with more than 40 Years of Proven Successes

**FSF SUPERFLAT™**  
DEFINED TRAFFIC FLOOR



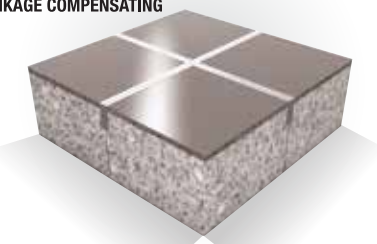
FSF Superflat Floors offer both Super Flatness and Durability for VNA (Very Narrow Aisle) warehouses.

**FPS ASRS™**  
PRECISION SLAB



The FPS ASRS Precision Slab is the ideal solution for Automatic Storage Retrieval System facilities. It's tough surface and rebar-reinforced slab provides unmatched performance for ASRS facilities.

**FSC ADVANTAGE™**  
SHRINKAGE COMPENSATING



FSC Advantage Shrinkage Compensating floors have up to 90% fewer joints than conventional concrete with reduced curling and greater surface durability.